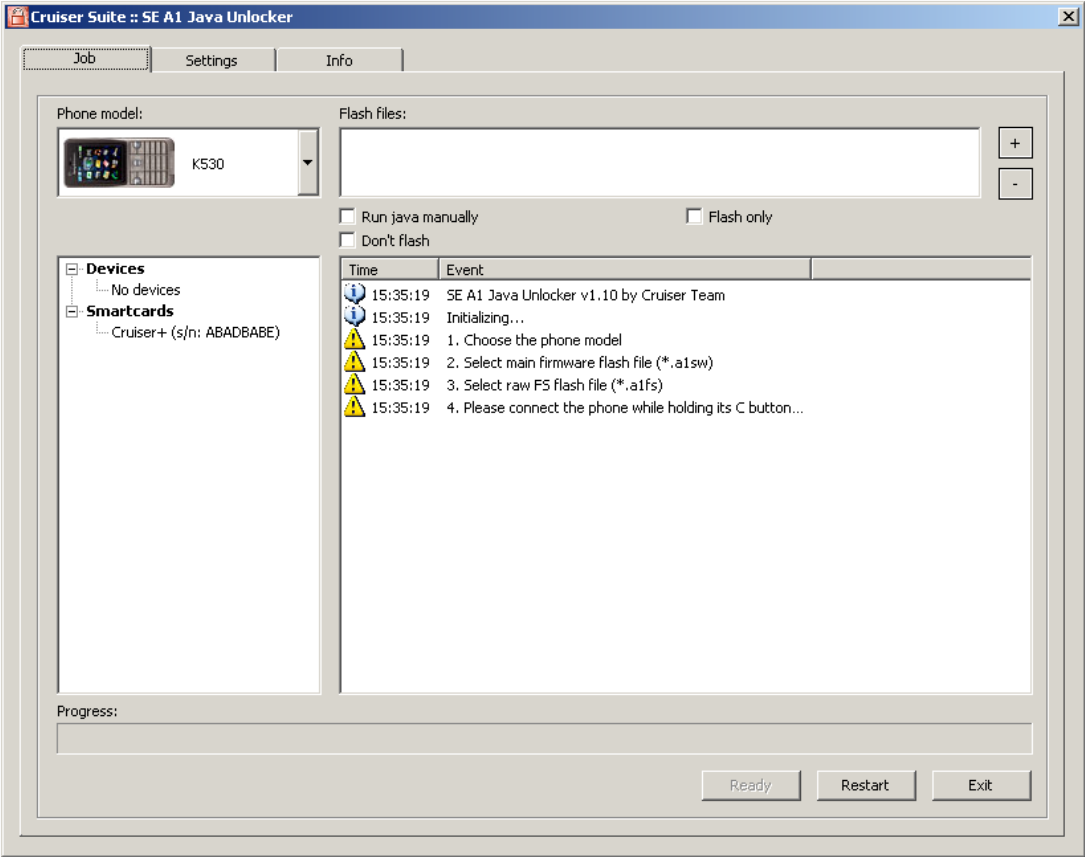
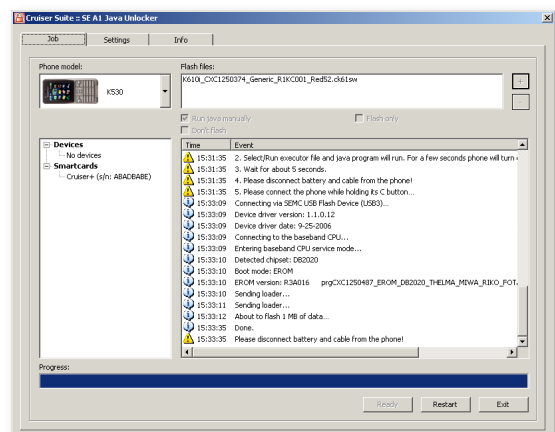
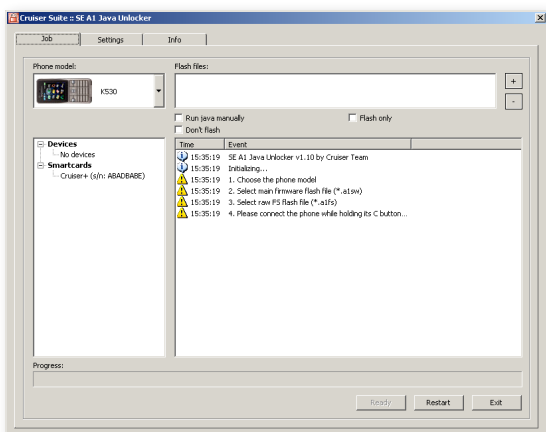


Cruiser Suite SE A1 Java Unlocker User's Guide



Contents

Introduction	3
Installation	4
Standard unlocking procedure	5
Unlocking procedure without flashing	7
Unlocking procedure with manually run Java program	8
Flashing procedure only	11
FAQ	12



Introduction

With our A1 Java Unlocker you can [unlock DB2020 and DB2012](#) platform based phones simply, without internet connection and of course you don't need any logs. All you need is the original SIM card for which is the phone locked, or test sim card. A1 Java Unlocker can easily [repair](#) the phone previously broken by patch via SETool.

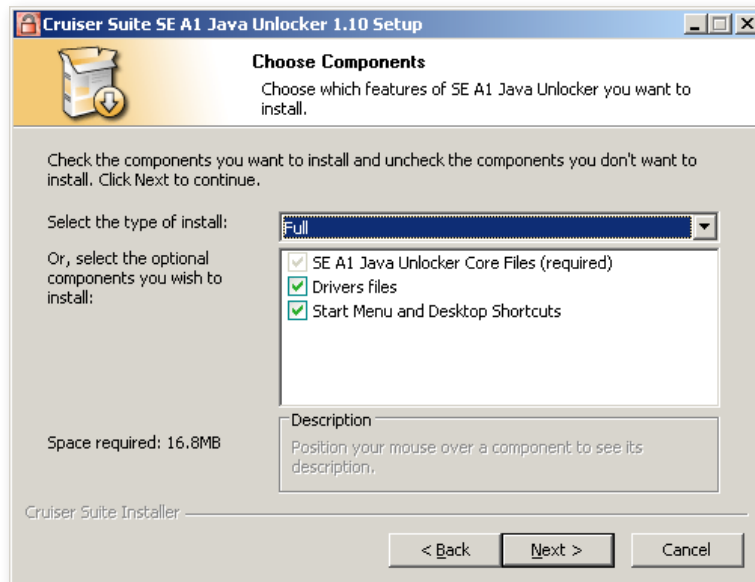
Currently supported platforms:

- DB2012
- DB2020



Installation

1. Run installer `SeA1JavaUnlocker_v1.10-installer.exe`
2. Follow the installation wizard's instructions



Standard unlocking procedure

Turn off or disable any Sony Ericsson PC Suite or any other program which can use phone as modem device. Follow these instructions:

Step 1

- 1.** Choose the phone model.
- 2.** Select main firmware flash file (*.a1sw, *.c*sw)
- 3.** Select raw FS flash file (*.a1fs, *.c*fs)
- 4.** Connect the phone while holding its 'C' button.
- 5.** After flashing and customization are done, disconnect battery and cable from the phone.
- 6.** Inserted test card or sim card for which is the phone locked.
- 7.** Power on the phone by power on/off button.
- 8.** Wait to customization finished.
- 9.** Power off phone by power on/off button.

continued 

Step 2

- 1.** Please connect the phone while holding its ‘C’ button.
- 2.** After data uploading is done, disconnect battery and cable from the phone.

Step 3

- 1.** Check if test card or SIM card for which is the phone locked is still inserted.
- 2.** Power on the phone by power on/off button.
- 3.** Install phone modem drivers if it is needed.
- 4.** In phone choose “PHONE MODE” if you can choose it.
(Some old phones haven’t this option [for example Z310])

Step 4

- 1.** Disconnect battery and cable from the phone.
- 2.** Remove SIM card from phone.
- 3.** Please connect the phone while holding its ‘C’ button.
- 4.** After all has been done, disconnect battery and cable from the phone.
- 5.** Power on the phone by power on/off button.
- 6.** Go to Entertainment and select Games.
- 7.** Delete executor file.

Unlocking procedure without flashing

You don't need to turn off or disable any Sony Ericsson PC Suite or any other program which can use phone as modem device. Phone firmware has to be the same as selected firmware flash file (see Step 2.2). Check your phone software version using its service menu:

- Power on your phone.
- Type (by pressing arrows and star symbol): >*<*<*<*
- Choose Service info.
- Choose Software info. The first three lines of text include phone firmware version.
- In A1 Java Unlocker, check "Skip full flashing" checkbox.
- Follow these instructions:

Step 1

None

Step 2

- 1.** Choose the phone model.
- 2.** Select main firmware flash file (*.a1sw, *.c*sw).
Firmware must be the same as is in the phone!!!
- 3.** Please connect the phone while holding its 'C' button.
- 4.** After data uploading is done, disconnect battery and cable from the phone.

continued 

Step 3

- 1.** Check if test card or SIM card for which is the phone locked is still inserted.
- 2.** Power on the phone by power on/off button.
- 3.** Install phone modem drivers if it is needed.
- 4.** In phone choose “PHONE MODE” if you can choose it.
(Some old phones haven’t this option [for example Z310])

Step 4

- 1.** Disconnect battery and cable from the phone.
- 2.** Remove SIM card from phone.
- 3.** Please connect the phone while holding its ‘C’ button.
- 4.** After all has been done, disconnect battery and cable from the phone.
- 5.** Power on the phone by power on/off button.
- 6.** Go to Entertainment and select Games.
- 7.** Delete executor file.

Unlocking procedure with manually run Java program

You don't need to install modem drivers for the phone.

- Check "Run java manually" checkbox
- Follow these instructions:

Step 1

- 1.** Choose the phone model.
- 2.** Select main firmware flash file (*.a1sw, *.c*sw)
- 3.** Select raw FS flash file (*.a1fs, *.c*fs)
- 4.** Connect the phone while holding its 'C' button.
- 5.** After flashing and customization are done, disconnect battery and cable from the phone.
- 6.** Inserted test card or sim card for which is the phone locked.
- 7.** Power on the phone by power on/off button.
- 8.** Wait to customization finished.
- 9.** Power off phone by power on/off button.

continued 

Step 2

- 1.** Please connect the phone while holding its 'C' button.
- 2.** After data uploading is done, disconnect battery and cable from the phone.

Step 3

- 1.** Power on the phone by power on/off button.
- 2.** Go to Entertainment and select Games.
- 3.** Select/Run executor file and java program will run.
For a few seconds phone will turn off.
- 4.** Wait for about 5 seconds.

Step 4

- 1.** Disconnect battery and cable from the phone.
- 2.** Remove SIM card from phone.
- 3.** Please connect the phone while holding its 'C' button.
- 4.** After all has been done, disconnect battery and cable from the phone.
- 5.** Power on the phone by power on/off button.
- 6.** Go to Entertainment and select Games.
- 7.** Delete executor file.

Flashing only

- Check “Flash only” checkbox
- Follow these instructions:

- 1.** Choose the phone model.
- 2.** Select main firmware flash file (*.a1sw, *.c*sw)
- 3.** Select raw FS flash file (*.a1fs, *.c*fs)
- 4.** Connect the phone while holding its 'C' button.
- 5.** After flashing and customization are done, disconnect battery and cable from the phone.
- 6.** Inserted test card or sim card for which is the phone locked.
- 7.** Power on the phone by power on/off button.
- 8.** Wait to customization finished.
- 9.** Power off phone by power on/off button.

Flashing successful.

FAQ

Error: File executor has not been found or you can't find executor program in games (in manually run java program).

Start unlocking again and follow instructions carefully, especially when you're asked to power on phone and wait for finish "Please wait" customization.

Error: At the end of procedure: Sending loader... Error: 0xA8A269DB

Before last attaching by 'C' remove SIM card from phone.

Error: Flash Firmware version is not supported. Try another version.

This version of the firmware is not supported yet. We will prepare restore files for these firmware versions soon.

Error: Connecting via SEMC WMC Device (COM34, COM33). Error: 0xA8A269DB

1. Do you have in phone SIM card which is accepted by phone? Can you enter menu on phone etc.?
If you see "Insert Correct SIM Card" it means your SIM card is not accepted.
2. Uninstall Sony Ericsson PC Suite or any other program which can use phone as modem device.

Error: While flashing the files: 0x5593BD55

Chosen flash files do not correspond with phone type or phone CID.